



ShiraTech Installation Guide (NBIOT)

About ShiraTech-Knowtion

ShiraTech Knowtion is an AI company with special expertise in predictive maintenance and condition monitoring technologies. We combine extensive sensor-driven data monitoring with multi-layered artificial intelligence to ensure your equipment operates continuously with maximum efficiency at minimal cost.



Collecting data
in a non-intrusive
manner



Predicts and early
detects equipment
failure



Provides
actionable
insights



Allows real-time,
informed decision-
making



Increase
factory yield

Our Solution

We have created a secure, flexible, Plug & Play solution designed to work with a variety of equipment types and working conditions. Our solution includes:

- Non-Intrusive, Plug& Play multi-sensors including vibration, magnetic field, temperature, and sound sensors with Edge analytics capabilities for machine learning and anomaly detection
- Analytics software enabling:
 - Sensor data collection
 - Data visualization
 - Sensor management
 - Data access API
 - Alert management
- Success management services to ensure a smooth and effective onboarding process

iCOMOX™/Device

A multi-sensor box produced by Shiratech-solutions. Multiple iCOMOX™ devices can monitor a single asset or process, uploading multiple physical readings to the cloud for analysis.

ShiraTech Installation Guide

Installation Kit:



iCOMOX™



Type C- power connector



DC/DC converter (optional)

Installation instructions: Option 1- 220V convertor

01

Connect the Type-C USB cable to the Type-C connector in the iCOMOX™, tight the connections



02

Connect the iCOMOX™ to the power system



Installation instructions: Option 2- DC/DC Converter

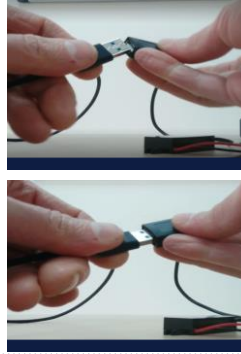
01

Connect the Type-C USB cable to the Type-C connector in the iCOMOX™, tight the connections



02

Connect the USB Type-C cable to the DC/DC converter



03

Connect the Wires from the DC/DC converter to the power system

